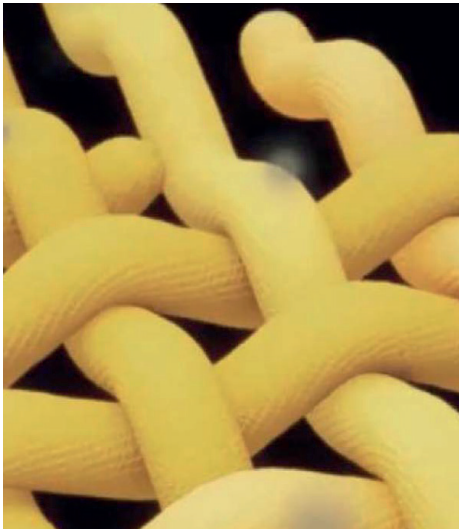


# AGILE

Agile is an **innovative structural fabric** that uses tightly woven ultra-fine yarns to create a fabric with **high strength at a supreme low weight**. Developed using Hainsworth's Fibre Positioning Technology, this intelligent fabric provides increased flexibility while still delivering excellent thermal protection and market-leading abrasion resistance.



---

## LETTING YOU MOVE NATURALLY

Heat stress is the greatest risk to your life on the job. AGILE is constructed from ultra-fine yarns, giving the fabric a lower weight of 180 gsm. This means that it places less strain on your body, allowing for increased endurance so you can perform at your optimum level for longer periods of time.

We've used Fibre Positioning Technology to develop a unique fabric construction that gives the wearer increased flexibility and freedom of movement. While wearing AGILE you can move and react with minimal interference, allowing you to focus on the vital task at hand.

---

## CONFIDENCE IN ALL ASPECTS OF PROTECTION

AGILE has been developed to provide intense protection from heat and flame. The patented Gabardine Plus construction of densely packed yarns results in a stronger fabric with increased resistance to break-open, leaving you confident that your kit will work with you to perform. Developed with your safety in mind, AGILE is constructed with a tight weave that gives maximum resistance to the penetration of liquid chemicals, meaning harmful particulates have less chance of passing through the fabric.

- Increased protection from chemical ingress
- Lower risk of exposure to hazardous chemicals
- Remain confident in your protection

---

## CONSTRUCTED TO LAST

AGILE has been developed to be extremely hard-wearing, keeping you looking sharper for longer in even the harshest conditions. The innovative construction gives the fabric a modern technical appearance with no visible grid or pattern, and thanks to its fine yarns, stays looking great even after repeated cleaning. AGILE can withstand 60 wash cycles without losing any of its protective qualities and is highly resistant to abrasion, keeping you safer for longer.

AGILE